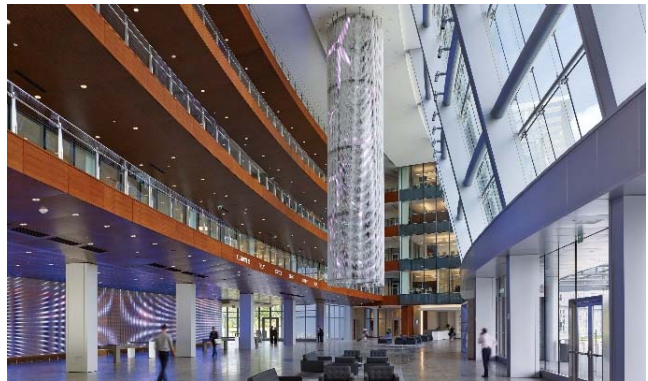


# EATON CENTER

Cleveland, Ohio



## Project Description

The Albert M. Higley Co. served as construction manager for Eaton Corporation's World Headquarters in Cleveland, Ohio. The facility included corporate offices, conference and training spaces for Eaton University, an auditorium, cafeteria, and experience center. The project consisted of a 587,000 SF interconnected ten-story office tower flanked by two crescent-shaped five-story wings, a 332,900 SF (1,100-car) five-level parking garage, a 30,000-SF wellness center, and 53 acres of site development.

An atrium lobby included interactive technology highlighting the history of the company and its products, as well as an LED-lit chandelier. A porte-cochere wraps the front entrance. The landscape design built upon the inherent features of the site creating an environment featuring both formal and naturalized landscape area.

This project received LEED® Gold Certification.

Client:

Eaton Corporation

Architect:

Pickard Chilton

Size:

950,000 SF

Project Cost:

\$175 MM

Project Completion:

February 2013